



Venues and Dates

Belfast Queens Film Theatre
Box Office: 028 9097 1097
Prog 1: Tue 16th Feb
Prog 2: Wed 17th Feb
Prog 3: Thur 18th Feb
www.queensfilmtheatre.com

Bournemouth AUCB
Prog 1: Fri 12th Feb
Prog 2: Tues 16th Feb
Prog 3: Tues 23rd Feb
www.aucb.ac.uk

Bradford National Media Museum
Box Office: 0870 70 10 200
Prog 1: Wed 17th Feb
Prog 2: Sun 21st Feb
Prog 3: Sat 27th Feb
www.nationalmediamuseum.org.uk

Bristol Watershed
Box Office: 0117 927 5100
Prog 1: Tues 23rd Feb
Prog 2: Sat 27th Feb
Prog 3: Tues 9th Feb
www.watershed.co.uk

Cardiff Chapter Arts
Box Office: 029 2030 4400
Prog 1: Mon 8th Feb
Prog 2: Mon 15th Feb
Prog 3: Mon 22nd Feb
www.chapter.org

Derby QUAD
Box Office: 01332 290 606
Prog 1: Tue 9th Feb
Prog 2: Tue 16th Feb
Prog 3: Tue 23rd Feb
www.derbyquad.co.uk

Dundee DCA
Box Office: 01382 909 900
Prog 1: Mon 15th Feb
Prog 2: Tues 16th Feb
Prog 3: Weds 17th Feb
www.dca.org.uk

Edinburgh Filmhouse
Box Office: 0131 228 2688
Prog 1: Mon 8th Feb
Prog 2: Thurs 11th Feb
Prog 3: Weds 24th Feb
www.filmhousecinema.com

Exeter Animated Exeter at Exeter Picture House
Box Office: 01392 667080
Prog 1: Fri 12th Feb
Prog 2: Sat 13th Feb
Prog 3: Sun 14th Feb
www.animatedexeter.com

Falmouth The Poly
Box Office: 01326 212300
Prog 1 Tues 9th Feb
Prog 2 Thur 11th Feb
Prog 3 Tues 23rd Feb
www.thepoly.org

Farnham Maltings
Box Office: 01252 745444
Prog 1: Mon 8th Feb
Prog 2: Mon 15th Feb
Prog 3: Mon 22nd Feb
www.farnhammaltings.com

Glasgow Glasgow Film Theatre
Box Office: 0141 332 6535
Prog 1: Mon 8th Feb
Prog 2: Weds 10th Feb
Prog 3: Tues 16th Feb
www.gft.org.uk

Harrow Westminster University
Prog 1: Mon 8th Feb
Prog 2: Mon 15th Feb
Prog 3: Mon 22nd Feb
www.westminster.ac.uk

Lincolnshire University
Prog 1: Tues 9th Feb
Prog 2: Tues 16th Feb
Prog 3: Tues 23rd Feb
www.lincoln.ac.uk/events

London BFI Southbank
Box Office: 020 7928 3232
Prog 1: Thur 18th & Sun 28th
Prog 2: Fri 19th & Sat 27th
Prog 3: Sun 21st & Fri 26th
www.bfi.org.uk

Liverpool FACT
Box Office: 08717 042063
Prog 1: Tues 21st Feb
Prog 2: Weds 22nd Feb
Prog 3: Thur 23rd Feb
www.fact.co.uk

Maidstone – UCCA
Prog 1: Mon 8th Feb
Prog 2: Mon 15th Feb
Prog 3: Mon 22nd Feb
www.ucreative.ac.uk/maidstone

Manchester Cornerhouse
Box Office: 0161 200 1500
Prog 1: Mon 15th Feb
Prog 2: Weds 10th Feb
Prog 3: Thur 11th Feb
www.cornerhouse.org

Middlesbrough Animex
Prog 1: Mon 8th Feb
Prog 2: Tues 9th Feb
Prog 3: Weds 10th Feb
www.animex.tees.ac.uk

Norwich Cinema City
Box Office: 0871 704 2053
Prog 1: Mon 8th Feb
Prog 2: Mon 15th Feb
Prog 3: Mon 22nd Feb
www.picturehouses.co.uk

Ormskirk Edge Hill University
Box Office: 01695 584534
Prog 1: Mon 8th Feb
Prog 2: Tues 9th Feb
Prog 3: Weds 10th Feb
www.edgehill.ac.uk

Plymouth Peninsula Arts Cinema
Box Office: 01752 585050
Prog 1: Mon 15th Feb
Prog 2: Tues 16th Feb
Prog 3: Weds 17th Feb
www.plymouth.ac.uk

Portsmouth University
Prog 1: Weds 17th Feb
Prog 2: Weds 24th Feb
Prog 3: Weds 24th Feb
www.port.ac.uk

Sheffield Showroom
Box Office: 01142757727
Prog 1: Mon 22nd Feb
Prog 2: Tues 23rd Feb
Prog 3: Weds 24th Feb
www.showroom.org.uk

Staffs Staffordshire University
Prog 1: Mon 8th Feb
Prog 2: Weds 10th Feb
Prog 3: Thur 11th Feb
l.m.weston@staffs.ac.uk

Totnes Dartington Arts
Box Office: 01803 847070
Prog 1: Mon 15th Feb
Prog 2: Tues 16th Feb
Prog 3: Weds 17th Feb
www.dartington.org/arts

Wolverhampton Lighthouse
Box Office: 01902 716 055
Prog 1: Tues 9th Feb
Prog 2: Tues 16th Feb
Prog 3: Tues 23rd Feb
www.light-house.co.uk

**Best of BAA
2010 DVD
coming soon...**



For more information email:
info@britishanimationawards.com

Sponsors and Contributors

Aardman Animation

Astley Baker Davies

Blue Zoo

British Council

C4 Digital Shorts

CBBC

Cel Action

Chapman Entertainment

Collingwood O'Hare

Dept. A

Dinamo Productions

Festivus

Fonic

Glassworks

HiT Entertainment

HRA

Millimage

Not To Scale

Passion Pictures

Picasso Pictures

Production Base

Taylor Drew Productions

Toon Boom

UK Film Council

Uli Meyer Studios

Uncle Post Production

We Write Music

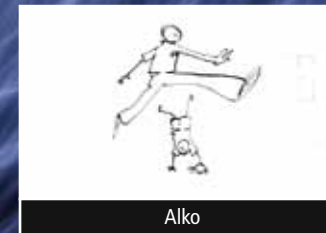
Thanks to Glassworks for their support with this touring programme.

British Animation Awards 2010



Public Choice

YOU – the audience – are invited to participate in the British Animation Awards 2010 by voting for your favourites at each screening



Design by www.webclunet.at
Cover image © Lars Sanderom, Lund, Sweden

PROGRAMME

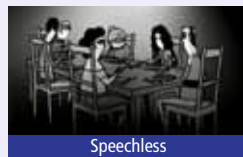
1



The Moonbird



Junk



Speechless



Birdy Nam Nam



Gravenhurst



Flogging Molly: Float



Rabbit Punch



Touché

The Moonbird

A dark fairytale about an orphan girl who must outwit a terrible sorceress with the help of a magical bird.

Greg & Myles McLeod | The Brothers McLeod | 15:00

The Girl with Stories in her Hair

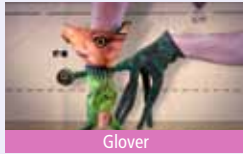
In a brothel, young Odette has her hair combed in preparation for the next client, remembering and now doubting what her mother used to tell her. Phoebe Boswell | Central St Martins | 2:54

What Light (Through Yonder Window Breaks)

The sunlight cast through a bedroom window breaks free and takes on new shapes as it journeys around the room Sarah Wickens | RCA | 4:15



Tad's Nest



Glover



Ain't Got Nobody



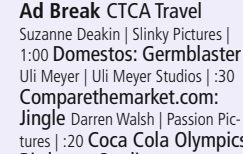
Text Island



My Blood Is My Tears



Comparethemarket.com: Jingle



Sam's Hot Dogs

PROGRAMME

2



The Black Dog's Progress

My Blood Is My Tears

Fighting against 'feeling unreal', against the inability to cry and express emotions, the urge to cut away 'the monster inside themselves'. Andy Glynnne | Mosaic Films | 3:20

The Black Dog's Progress

A series of flipbooks tell the sad story of the Black Dog's abandonment and corruption through acts of violence. Stephen Irwin | Animate Projects | 3:15



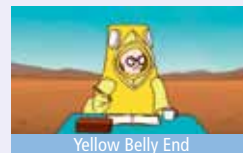
Fields of Vision



Wolves



Codswallop



Yellow Belly End



Midfield General: Teddy Bear



Goodbye London



Simon's Cat: TV Dinners

Damaged Goods

A tragic love story played out by porcelain figurines, exploring notions of forbidden love, material wealth and class divide using the traditions of value within ceramics. Barnaby Barford | Nexus Productions / Animate Projects | 9:24

Tad's Nest

A place where eels mature before being compelled to return to a location using only memories of sensations to guide them. Petra Freeman | Rapid Eye Movies/Animate Projects | 4:48

Glover

Glover travels to the edge of the world after a mysterious map arrives which transforms his monochromatic existence. Jo Lawrence | Picasso Pictures | 7:53

Ain't Got Nobody

A man with no body but a whole lot of souls performs the song of his life accompanied by a band of shadowy characters. 12Foot6 | 5:09



Little Face

Norwich To Sheringham

An old man, a bus nut and an annoying kid ramble and muck about on a bus ride going from Norwich to Sheringham. Bali Engel | RCA | 6:18

Heartstrings

When falling in love means being tied together, what happens when you discover the length of the string? Rhiannon Evans | International Film School, Wales | 2:51

Text Island

A parable on the destruction of the planet. Chris Gavin | 3:30

Animal Kingdom: Chalk Stars

A man and a woman sit facing each other in a light-house... Thomas Hicks | 6:50

Coldplay: Strawberry Swing
Chris Martin moonlights as a superhero and saves a damsel in distress. Shynola | RSA Films | 3:30

PROGRAMME

3

Train of Thought

In a world made entirely out of paper, the wistful drawings in a man's sketchbook are brought to life by the rhythm of a train journey. Leo Bridle & Ben Thomas | The Arts Institute at Bournemouth | 3:57

Unicycle Film

Two unicyclists find each other in a dark forest and fall in love and when they embrace their Unicycles work together as a bicycle. Thomas Hicks | Animate Projects | 5:40

Fields of Vision

A boy happily plays with his ball until his father brings home a new toy. Rob Zywiets | 4:00

mi'au, myau

5 birds of different nationalities sit on a branch, each trying to outdo the other in its own language. Vida Vega | UCA Farnham | 1:00

Wolves

A howling wolf, an embarrassing incident and a missed

opportunity. Love is made of courage. Rafael Sommerhalder | RCA | 5:56

Codswallop

A subconscious drift through despair, frustration, joy and redemption. Greg & Myles McLeod | The Brothers McLeod | 3:39

Becoming Invisible

Violent nightmares, suicidal wishes and an inability to live in your own skin. Andy Glynnne | Mosaic Films | 4:00

Yellow Belly End

An enormous cliff top, blue sky, multiple deaths and a man keeping a meticulous note of it all. But his quiet, contained existence is threatened as he is drawn ever nearer to the cliff edge himself... Philip Bacon | NFTS | 8:47

Little Face

Nathan's job has nothing to do with dinosaurs. This makes Little Face sad. Matthew Walker | Arthur Cox | 10:30

Ethav: Sleep

A surrealist vision focused on dreams and relationships. Tibor Banoczki & Sarolta Szabo | Domestic Infelicity | 3:47

Midfield General: Teddy Bear

A lonely truck driver and a young kid are brought together through CB radios. Ste McGregor | Skint | 6:09

Goodbye London

The bitter-sweetness of London life, with sketchy

characters, drawn on dirty walls in dodgy areas. Murray John | 4:00

Rex the Dog: Bubblicious

How to make your very own 'Rex the Dog' video. Geoffroy de Crecy | Partizan | 3:15

The Astronomer's Sun

A young man visits an abandoned observatory to confront memories of his past and follow his father on a journey into the unknown.

Simon Cartwright & Jessica Cope | Duchy Parade Films | 5:21

Ad Break Comcast: Anthem

60 Smith & Foulkes | Nexus Productions | 1:00 Bridgestone Tyres: Taters Daniel Kleinman | Rattling Stick & Epoch NY/LA | 1:00 Coke Zero: Happy Kingdom Pete Candeland | Passion Pictures | 1:00 National Debtline Alan MacEachern | Ink Digital | :30 Nike: Cortez Brothers tokyoplastic/Finkbom | Picasso Pictures | :35

Simon's Cat: TV Dinners

A hungry cat resorts to increasingly desperate measures to gain its owner's attention. Simon Tofield | Tandem Films | 2:35

Best of BAA 2010 DVD coming soon...



For more information email: info@britishanimationawards.com